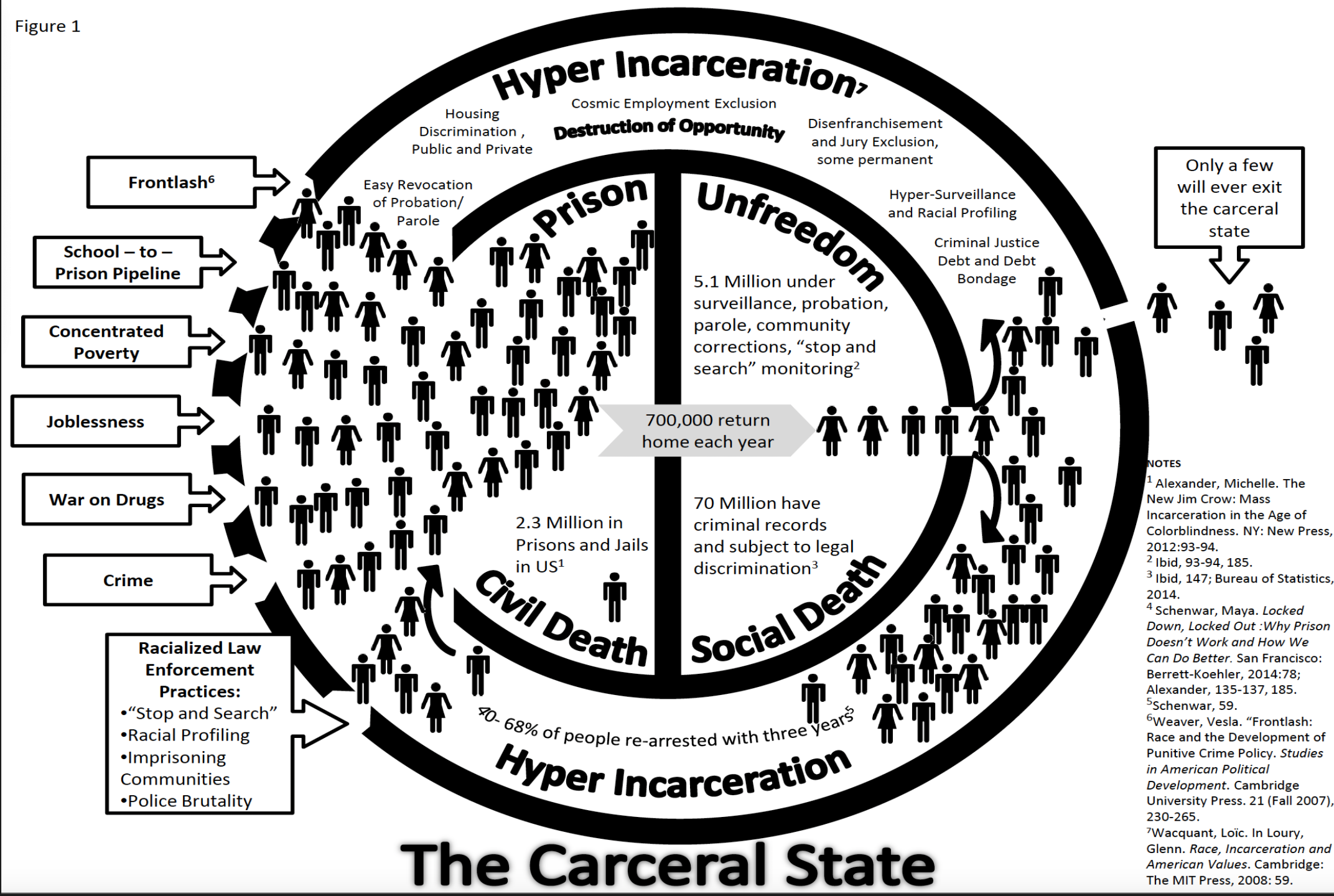




**Constructing Our Future and
Women's Leadership**

Figure 1



Housing Challenges for Formerly Incarcerated Women



- Our surveys during this pandemic have uncovered great housing precarity
- Permanent, safe housing is difficult to secure
- Most rely on family and friends for housing
- Such situations are not always ideal, especially long term
- Formerly incarcerated persons experience high rates of residential instability, which has been linked to recidivism

Operating Philosophy





Constructing Our Future

Mission and Vision

Vision: Constructing our Future (COF) was created and continues to be led by previously incarcerated women. Our vision is that previously incarcerated women leaving prison who have a strong desire to restart their lives need to have **a home base where they feel supported and welcomed back** to the community and to have a path to permanent housing and sustainable employment.

Mission: Constructing our Future (COF) **welcomes back** previously incarcerated women who have **demonstrated a sincere desire** to be independent, law abiding citizens upon their return by **providing** a safe, affordable place to live immediately upon release and a path to permanent, stable housing. COF surrounds the newly released woman with other women who have taken a similar journey and it prepares them for livable wage jobs, independent living, and family reintegration through: mentorships; connections with necessary resources; assistance with financial, social, and job skills; and access to education, recovery and mental health services. COF also advocates for public policies that support full reintegration of previously incarcerated women.





Founding Members of COF

Constructing our Future Scope

- Serves previously incarcerated women
 - Demonstrated desire to restart their lives
 - Not to be limited by type of conviction or length of sentence
- Supports successful initial reentry and preparation for permanent housing and sustainable employment
- Leverages key partnerships with other agencies for identified support services such as mental health counseling, addiction treatment, financial literacy training, career mentorships, etc.

Constructing Our Future Narrative Project



*Telling Our
Stories &*
DECLARING
BRIGHT FUTURES



www.constructingourfuture.org

Financial Literacy Information Packet



Our Mission Statement

COF surrounds the newly released woman with other women who have taken a similar journey and it prepares them for livable wage jobs, independent living, and family reintegration through: mentorships; connections with necessary resources; assistance with financial, social, and job skills; and access to education, recovery and mental health services.

constructingourfuture.com

EMPOWERING
WOMEN
THROUGH
FINANCIAL
LITERACY



Constructing Our Future Women's Reentry 2024 Questionnaire



PRIORITIZING YOUR HEALTH - INDIANA H.O.P.E. 2024



HIV/AIDS OUTREACH PREVENTION EDUCATION
FAMILIES & JUSTICE-INVOLVED
ALL ARE WELCOME!!

Join Us!

AUGUST 17
12:00 - 3:00
INDIANAPOLIS

NORTH UNITED METHODIST CHURCH
3808 N MERIDIAN STREET
CONTACT: MICHELLE DANIEL JONES | 917-755-5492

WE WILL HAVE FOOD, SPEAKERS, VENDORS,
FREE TESTING, SWAG BAGS, AND MORE!

100%
FREE



AUTHOR,
SOCIAL ACTIVIST,
SURVIVOR.

A Conversation
With
SUSAN BURTON



Author of *Becoming Ms. Burton*, founder of A New
Way of Life and the SAFE House Network
Monday, April 22, 2024 • 6:30pm • Chapel







Constructing Our Future (COF) entered a strategic and mission-aligned partnership with Broadway United Methodist Church (Broadway UMC) to establish The Newton House, a transitional and supportive housing initiative for women impacted by the justice system.







Constructing Our Future

Program Goals

- Returning women are welcomed into a safe, healthy, supportive, affordable place to live immediately upon their release.
- Returning women are connected to needed services such as mental, physical healthcare, and substance abuse services.
- Returning women are connected to appropriate skill building, education, and employment services to prepare them to successfully re-enter the work force.
- COF is a stable entity with appropriate governance, leadership, and financial stability to ensure long term viability.



Constructing Our Future Theory of Change Model



Welcome Back: Upon release, the person needs to secure safe living conditions and access to services

Week One	Month One	Month Three
<ul style="list-style-type: none">• Safe Housing• Community Support• Food, (Sunday Dinners)• Family Visitation• Recovery/ Social Support• Connect With Trusted Mentors For Mentor• Visit The Neighborhood• Spiritual Support	<ul style="list-style-type: none">• Create Three Goals• Secure Employment Through Partnerships• Connect With Dress For Success For Clothing For Interviews And Work• Connect With Arise2gether For Reentry Support• Connect With PACE• Connect With Dream Deferred For Computer Training• Research Educational And Career Opportunities• Obtain Employment• No Rent Paid First Month• Keep First Check• Ascertain Family Reunification Goals And Provide Support	<ul style="list-style-type: none">• Connect With First Financial Bank For Financial Literacy Training And Budgeting• Continue Education Pursuits• Continue Career Pursuits• Continue Entrepreneurial Pursuits

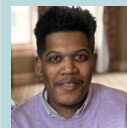


CI – CURRENTLY INCARCERATED
FI – FORMERLY INCARCERATED
DI – DIRECTLY IMPACTED

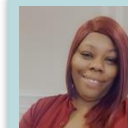
LEADERSHIP AND STAFF



MICHELLE
DANIEL - FI
Founder, Board
Pres./Exec. Dir.



JOSHUA
TROTTER
Asst. Dir. of
Operations



KAIESHA
TURMAN- FI
Housing
Coordinator

CURRENT BOARD MEMBERS



JESSIE
COBB-DENARD
Board Member,
Secretary



PARKER
REDELMAN
Board Member,
Treasurer



SENATOR
JD FORD
Board Member



PHYLLIS
NEWTON
Board Member



KACEY
RUDOLPH - FI
Board Member



ANDREA
AYIETTA - FI
Board Member



RHEANN
KELLY - CI
Founder and
Board Member



BRIANNA
PUCKETT - DI
Board Member



TAYLOR
HINES
Board Member



CURRENTLY INCARCERATED FOUNDERS



DOMINIQUE

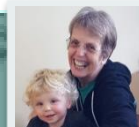


SARAH

FOUNDER



NATALIE



KELSEY
KAUFFMAN
Founder,
Former Board
Member

FORMERLY INCARCERATED FOUNDERS



VANESSA



CHRISTINA



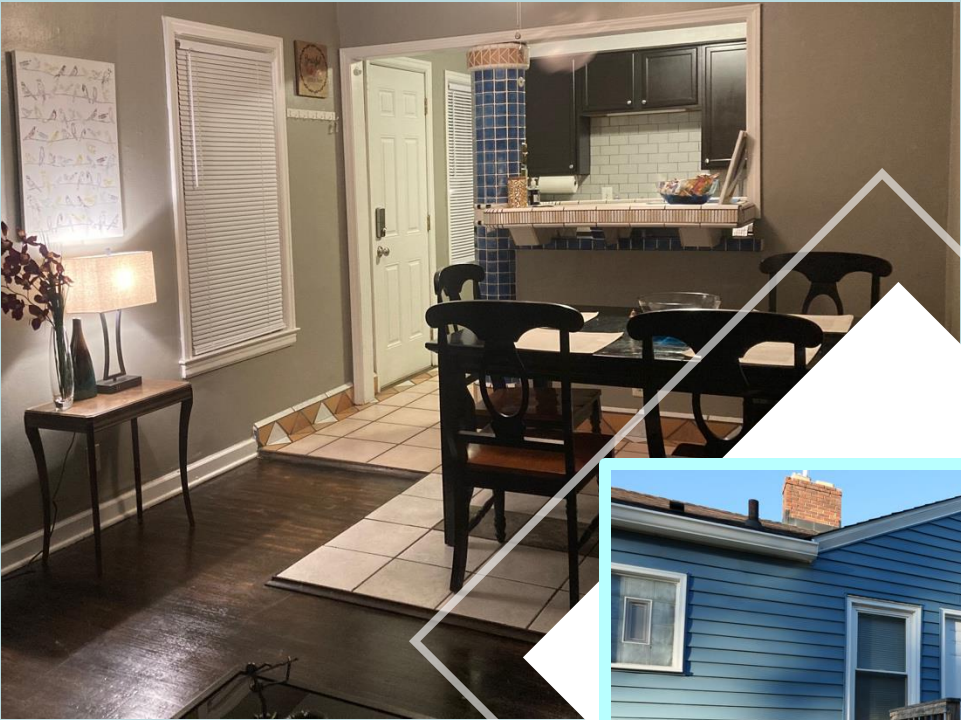
CHAR'DAE



KRISTINA



D'ANTONETTE



Our First House

Asks

- Join our board and help us grow
- Support The Newton House!!
- Connect us to funding opportunities.
- Help us network with potential supporters and volunteers
- Support our annual hygiene and hair care product drive at the Indiana Women's Prison



